

GASPE OF YESTERDAY

THE SECRETARY-TREASURER

Recall of an era in Gaspesia when
the Secretary-Treasurer of the local
school board was the indispensable
officer of the education process.

KEN ANNETT

THE SECRETARY-TREASURERINTRODUCTION

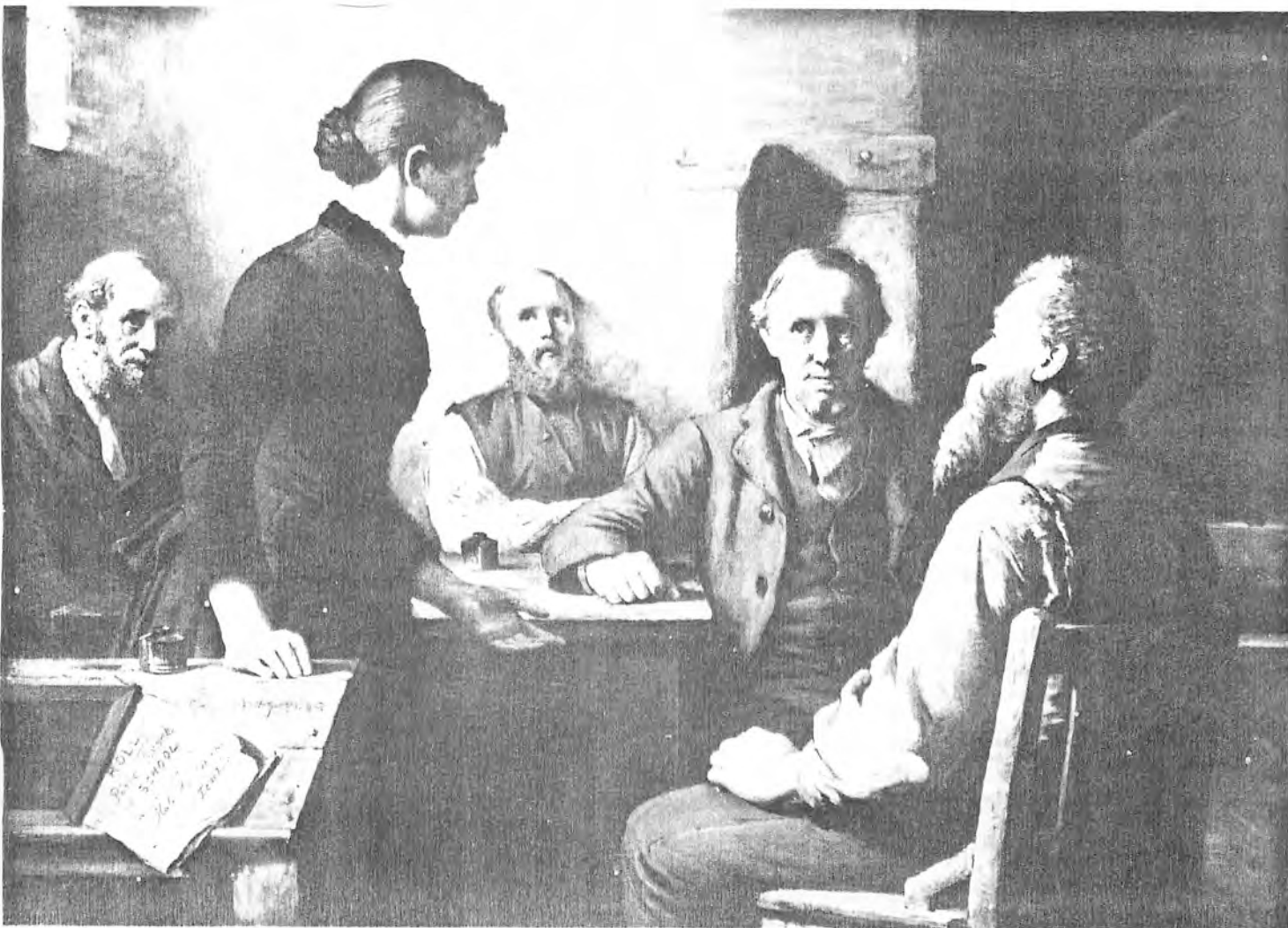
The structure and role of the Protestant School Boards in Gaspesia have changed greatly within living memory. In an era as recent as the 1930's, when the education of youth was more of a local concern, the Secretary-Treasurer of the local school board exercised a predominant and pervasive role. A rapid review of the Quebec Education Act in force in the 1930's provides impressive evidence of the duties and responsibilities of the Secretary-Treasurer of a school board. As administrator of the policies and decisions of the Board the Secretary-Treasurer compiled, implemented and preserved the Minutes of meetings. In the area of finance the issue of school tax bills, the collection of taxes and school fees and the receipt of grants from the Department of Education were among the responsibilities of the Secretary-Treasurer. In most cases it was the Secretary-Treasurer who advertised for teachers, prepared and signed teacher contracts and paid the salaries of the school principal, teachers and custodial staff. In localities where students were transported to school the necessary arrangements usually fell to the Secretary-Treasurer. Responsibility for the correspondence of the Board, for the completion and submission of various official reports to the School Inspector and the Department of Education and the payment of accounts for school supplies and services devolved upon the Secretary-Treasurer. The archival nature of the Secretary-Treasurer's office provided a focus of continuity for all those various aspects of local education and enhanced the importance of the Secretary-Treasurer's role.

Thus we find that it was customary for the Inspector of Schools to meet with the Secretary-Treasurer on the occasion of his visits to the local schools. The members of the school board would be called to meet only on such occasion when the Inspector had a message of unusual importance to communicate or a serious problem to discuss.

INTRODUCTION With reference to the reports of School Inspectors
(CTD) the following articles have been completed in this
"GASPÉ OF YESTERDAY" series:

- #070 GASPESIA'S FIRST SCHOOL INSPECTOR. (PETER WINTER)
- #103 GASPESIA'S SECOND SCHOOL INSPECTOR. (JOSEPH MEAGHER)
- #116 GASPESIA'S FIRST PROTESTANT SCHOOL INSPECTOR. (REV.Wm.LYSTER)
- #213 SCHOOL INSPECTION REPORTS OF REV.I.N.KERR

From the records of the Department of Education of Quebec - Protestant Sector, "GASPÉ OF YESTERDAY" has selected two periods - that of 1931-32 and that of 1956-57 to recall the Secretary-Treasurers of the School Boards of the Counties of Bonaventure and Gaspé and also of the Magdalen Islands. To these and to many another Secretary-Treasurer who served his/her fellow citizens with integrity and faithfulness, a vote of appreciation.



A Meeting of the School Trustees, Robert Harris, National Gallery of Canada

SECRETARY-TREASURERS OF PROTESTANT SCHOOL BOARDS FOR 1931-1932BONAVENTURE COUNTY

<u>SCHOOL BOARD</u>	<u>SECRETARY-TREASURER</u>	<u>ADDRESS</u>
BROADLANDS	HUGH SILLARS	SILLARSVILLE
COX	B.D.LAW	NEW CARLISLE
HAMILTON, diss.	CHARLES COOKE	NEW CARLISLE
MANN	THOMAS YOUNG	OAK BAY
MARIA, diss.	ERNEST GILKER	DIMOCK CREEK
MATAPEDIA	R. Aylett	MATAPEDIA WEST
NEW RICHMOND	EV. FALLOW	NEW RICHMOND STATION.
PASPEBIAC, diss.	HAROLD ROSS	HOPETOWN
PORT DANIEL EAST, diss.	P.L.ACTESON	GASCONS
PORT DANIEL CENTRE	FERGUS McPHERSON	PORT DANIEL CENTRE.
PORT DANIEL WEST	WILFRED BISSON	PORT DANIEL WEST
RESTIGOUCHE	FRED.P.ADAMS	BROADLANDS
SHIGAWAKE CENTRE	EDMUND ALMOND	SHIGAWAKE CENTRE
SHOOLBRED	L.A.EDWARDS	ESCUMINAC
CAPLAN, diss	GORDON GILKER	CAPLAN RIVER
ST.GODEFROI, diss.	EDWARD HAYES, Jr.	SHIGAWAKE EAST
ST.LAURENT, diss.	W.C.FRASER	MATAPEDIA

GASPÉ COUNTY

BARACHOIS, diss.	C.H.McCALLUM	BRIDGEVILLE
CAP d'ESPOIR	J.A.LeGRAND	CAPE COVE
DOUGLASTOWN, diss.	HAROLD S.BAIRD	DOUGLASTOWN
EDMONDS	FRANK LE PAGE	BOUGAINVILLE
GASPÉ BAY NORTH	AUSTIN B.PHILLIPS	PENINSULA
FONTENELLE	C.W.ROBERTS	FONTENELLE
GASPÉ BAY SOUTH	ARTHUR BOYLE	WAKEHAM
GASPÉ BASIN	SYDNEY MILLER	GASPÉ
GRAND GRÈVE	DANIEL W, PRICE	GRAND GRÈVE
HALDIMAND	ARTHUR MILLER	HALDIMAND EAST
PERCÉ, diss.	E. BIARD	PERCÉ

(ctd)

GASPÉ COUNTY

SYDENHAM,diss.	R.H.SIMPSON	ROSEBRIDGE
RED HEAD	JOHN C.MAHAN	WEYGAND
SEAL ROCK	W.J.ROBERTS	d'AIGUILLON
MALBAY	CHARLES DUNCAN	MALBAY
YORK	MAYNARD R.COFFIN	GASPÉ HARBOUR

MAGDALEN ISLANDS

GRAND ENTRY	ROBERT McPHAIL	GRAND ENTRY
ENTRY ISLAND	FELIX CASSIDY	ENTRY
GROSSE ISLE	THOMAS TURNBULL	LESLIE
OLD HARRY	CHARLES W.CLARKE	OLD HARRY
GRINDSTONE	FRANK W.LESLIE	GRINDSTONE

25 YEARS LATER1956 - 1957BONAVENTURE COUNTY

COX	B.D.LAW	NEW CARLISLE
GRAND CASCAPEDIA	MRS.AMELIA GILKER	GRAND CASCAPEDIA
MARIA,diss.	MRS.ALICE HARRISON	GRAND CASCAPEDIA
NEW RICHMOND	HERBERT GILKER	NEW RICHMOND WEST
PASPEBIAC,diss.	LESLIE DOW	HOPETOWN
CAPLAN, diss.	H.W.YOUNG	CAPLAN
SHIGAWAKE-PORT DANIEL	L.R.RAMIER	SHIGAWAKE
SHOOLBRED	L.A.EDWARDS	ESCUMINAC

[NO DATA AVAILABLE FOR MATAPEDIA, BROADLANDS, RESTIGOUCHE]

GASPÉ COUNTY

BELLE ANSE	REV.HUGH I.APPS	BELLE ANSE
CAP d'ESPOIR	SYDNEY L.CASS	CAPE COVE
CHANDLER, diss.	REV.C.S.BRETT-PERRING	CHANDLER
DOUGLASTOWN,diss.	ELMER R.BAIRD	GASPE HARBOUR
GASPE BAY NORTH	D.J.PHILLIPS	PENINSULA
GASPE	F.R.SAMS	GASPÉ

(ctd)

GASPÉ COUNTY (CTD)

GRAND GREVE
PERCE, diss.

HAROLD ROBERTS
FRANCIS C. TUZO

LITTLE GASPÉ
PERCÉ.

MAGDALEN ISLANDS

ENTRY ISLAND
GROSSE ISLE
OLD HARRY
GRINDSTONE

MRS. PERCY PATTON
THOMAS TURNBULL
W, GRANT CLARKE
P. F. TURNBULL

ENTRY
LESLIE
OLD HARRY
GRINDSTONE

1911

THE
SCHOOL LAW

OF THE

PROVINCE OF QUEBEC

WITH NOTES OF NUMEROUS JUDICIAL DECISIONS THEREON

Secretary-Treasurer of Commissioners or Trustees:—(See R. C. C., and R. P. C.)	
Who may not be.....	2801
Appointment and term of office.....	2795, 2796
Must give security.....	2797, 2802
Form of security.....	2803, 2805, 2808
Security bond and discharge to be deposited.....	2804, 2812
By insurance policy.....	2805
Must take oath.....	2797
May reside outside municipality.....	2798
Office hours.....	2799
Securities of, may free themselves.....	2810
Must renew his security.....	2806, 2811
Sureties of, may demand discharge.....	2812
Keeper of all books, documents, &c.....	2814
Keeps minutes of each meeting.....	2815
Signs the minutes.....	2707, 2815
Notes amendments in margin.....	2708
Copies of documents made are authentic.....	2816
Collects and has charge of all moneys.....	2817
Pays out sums authorized.....	2818
Certain demands paid without authorization.....	2818, 2819
Object of the payment must be clear.....	2819

(ctd)

Secretary-Treasurer of Commissioners or Trustees:—Continued.	Article
Cannot grant discharge or lend.....	2820 § 1, 2
Books must be in prescribed form.....	2821
Must preserve vouchers.....	2822
Must keep a Repertory.....	2823
Accounts and vouchers are open for inspection.....	2824
Must deliver copies of documents.....	2825
May be removed at any time.....	2795
Teacher or member of School Board cannot act as.....	2801
Remuneration of	2813, 2871
May appoint assistant Secretary-Treasurer.....	2800
Submits financial statement in July.....	2826
Submits abstract of statement to rate-payers.....	2828, 2829
Furnishes copies of statement.....	2829
Accounts of, audited annually.....	2827
Special audit of accounts.....	2830-2835
May demand an audit.....	2830
Sureties cannot be members of school board.....	2807
Sureties to be changed.....	2809
Posts up summary of statement.....	2829
Claims against prescribed in five years.....	2835
Registers limits of school districts.....	2607
May be sued by Commissioners in an action to account.....	2834
Pays teachers monthly.....	2709 § 16
Must take census of children in September.....	2768-2770
Must prepare statement of unpaid taxes in November.....	2885
Security:—	
Given by Secretary-Treasurers	2797, 2802



LEST WE FORGET !

In the '30's we bought our books at the grocery store in the village five miles away. I think the first grade reader cost four cents. You'd get a pencil box, a package of wax crayons for five cents, some scribblers, and a drawing book of construction paper. The total would be about \$1.75.

Sault Ste. Marie, Ontario, 1935

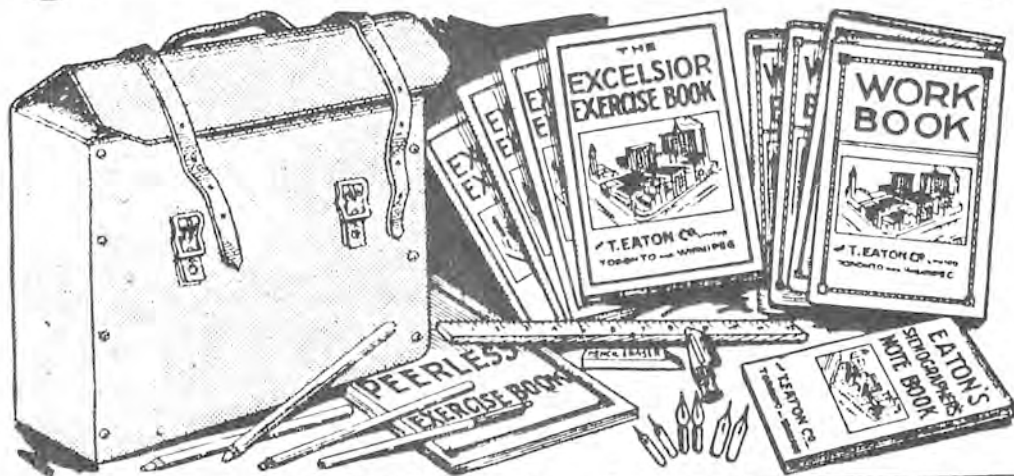


34-434. Primary Metal Box of Water Color Paints. Contains 1 large cake each of blue, orange, black and red, in separate pans, and one brush. Box 2 x 8 1/2 ins. Cover forms 3 mixing pans. **50c**



34-411 Our Big Value Scribbling or Work Books. Neat covers, good quality plain paper. Size of book 6 x 9 1/2 ins. **5 for 25c**

STATIONERY



34-418. Combination Eraser, one end for ink, the other for lead pencil marks. Price.... **5c**



Good quality School Slates, with plain wooden frames.
34-454. Size 6 x 9.. **15c**
34-455. Size 7x11.. **20c**
 Good quality School Slates with cloth-bound wooden frames. These frames will not scratch the desk and are quieter than slates with plain wooden frames.
34-456. Size 6 x 9.. **25c**
34-457. Size 7 x 11.. **30c**

School Outfit, of 26 Pieces Special Value, Complete 98c

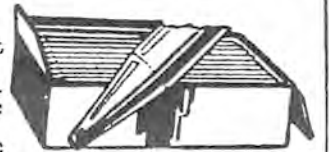
34-471. This outfit contains: brown fibreboard carrying case, (a strong case, size 12 x 9 1/4 x 3 1/4 ins., with leather handle), 4 scribblers, 4 pencil exercise books, 1 ink exercise book, 1 note book, 1 pad, 1 ruler, 4 lead pencils, 1 pencil sharpener, 1 eraser, 1 penholder and 6 pen points.
34-472. This outfit without carrying case. Price..... **50c**
34-473. Carrying Case, as described. Price..... **50c**



34-450. This is a reliable Pencil Sharpener with a sharp blade. Neat brass finish.. **20c**

Slate Pencils

Good quality soft Slate Pencils.
34-448. 12 in box. Price..... **8c**
34-449. 100 in box. Price..... **35c**



34-459. Double Compartment Pencil Box.



34-439. Scholar's Companion. A neat cardboard box containing 4 lead pencils, 1 penholder, with nib and 1 eraser. Size of box 1 1/2 x 9 1/2 ins. **25c**

School supplies available from the Eaton's catalogue, 1923